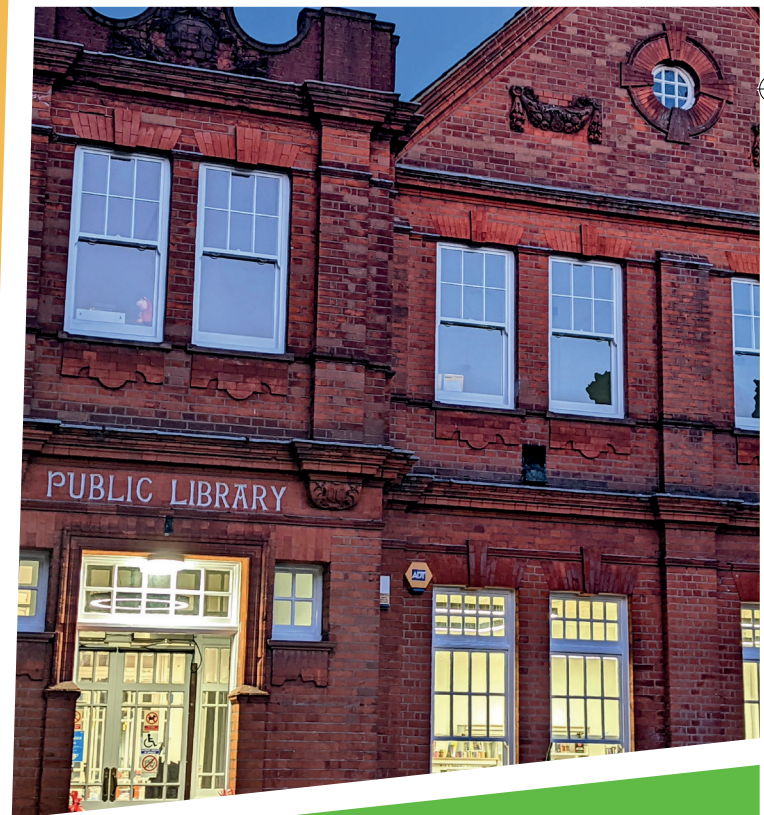


# Haringey Library Service Consultation

Have your say on proposals to vary  
library service hours



[haringeylibraries.commonplace.is](https://haringeylibraries.commonplace.is)

**Haringey**  
LONDON

# Introduction

In Haringey, we're proud of our libraries. We have some of the longest opening hours in London. In recent years, the council has made significant investments into library buildings to make them more accessible and user friendly. It is the council's plan for this investment to continue for the benefit of communities in years to come.

Whilst we have managed to protect libraries from cuts during the long years of austerity, due to severe constraints on council funding nationally, we are unable to sustain the current operating model. The council is therefore consulting residents and stakeholders on a range of options to vary library service hours.

This consultation is the first phase of a wider piece of work. The next phase in Autumn 2024 will look at collaborating with residents and stakeholders to develop a future strategy for libraries. This second phase of strategy development will include building a vision for libraries which includes the further development of ideas for income generation to provide growth and sustainability which, although they do not deliver the current savings target, have already been put forward by residents and library staff. These ideas were proposed during the previous Budget Consultation 2024-25 and targeted engagement in spring and early summer of 2024. This next phase will provide further opportunities to develop existing ideas which will contribute to ensuring Haringey's fantastic libraries thrive for many years to come.

## Contents

Why We Need To Review Opening Hours	3
What the Public Have Already Told Us in the Last Budget Consultation For 2024-2025	4
Background Information on Proposals	7
How We've Designed the Proposals for Varying Hours	10
Comparing Options	12
About Option 1	13
Opening Hours Proposal Option 1	14
About Option 2	17
Opening Hours Proposal Option 2	18



# Why We Need To Review Opening Hours

As part of its annual budget-setting and due to the very difficult national financial situation affecting all councils, Haringey Council had to agree savings of almost £9 million to come from a wide range of services during the current year 2024/25. As part of this broad package of savings, it was agreed to reduce the libraries operating budget by £675,000, or around 7% of the total council savings for 2024/25, based on a review of library opening hours. Over the next five years, the council has to reduce its overall budget by around £20 million.

The council consulted during December 2023 and January 2024 on its draft budget for the next five years. As well as the proposed reduction in the libraries operating budget, a second proposal was put forward to reduce the libraries budget by a further £676,000 by moving to a model based on self-service and volunteer-led community libraries, which a number of other councils have already adopted.

There was significant concern expressed in the responses to the public consultation on the overall budget about the library savings, in particular the move to self-service and volunteer-led libraries. Residents were concerned about safety in unstaffed libraries and the loss of professional library staff expertise. In response to public concerns expressed in the budget consultation, the council decided not to proceed with the budget proposal for self-service and volunteer-led libraries. However, given the current financial pressures facing the council, it was decided that the libraries operating budget would still need to be reduced as part of the overall package of savings.

This consultation is therefore about the best and fairest way to make this saving. We are putting forward two different options for varying library opening hours and we want to hear your views before putting a final proposal to the council cabinet in the autumn.

To arrive at these different options we have considered data about who currently does and does not use our libraries, looked at patterns of which libraries are most heavily used and at what times of day and days of the week, and analysed socio-economic and demographic data in the catchment areas for each library. We have also carried out initial qualitative engagement with library users, Friends of Libraries groups and other groups, and have spoken to neighbouring library services in other boroughs to understand their practice.

The options set out in this consultation document are working models. This means that the options for opening hours are being provided to explain different possible approaches and facilitate consultees providing feedback. The models and the hours proposed are subject to revision following the consultation.



# What the Public Have Already Told Us in the Last Budget Consultation For 2024-2025

In the Budget Consultation 2024-2025, conducted in December 2023 and January 2024, there were various comments highlighting residents' pride in the existing library programme. Such comments showed how important libraries are to the local community, with respondents explaining how Haringey's libraries have aided them and their families, particularly children.

Some respondents stressed that libraries are used for much more than just obtaining books. Many respondents stated that the libraries are particularly important when the cost of living is so high as they are a place where residents can not only have access to books and education but also to other facilities beneficial to residents.

## Financial benefits of reducing hours

There were concerns from residents about how successful the cost savings would be. There were concerns raised about the future-proofing of options and whether it was the beginning of an approach that would inevitably end in the closure of smaller libraries. A number of respondents highlighted the knock-on effect this may have on other services as well as social mobility within the borough.

Many residents supported the principle of looking at means to bring in funding such as hiring out space for commercial events. There was also support for allowing direct donations. There were some concerns over how stock is purchased and suggestions to reassess carrying some stock which is perceived as under-used, such as the DVD collection.

## Approach to reviewing opening hours and avoiding closures

There was support for adapting the borough's library service by looking at each library's needs and maximising resources when footfall was highest, rather than have a closure of any individual libraries.

## PressReader

There was mixed support for the removal of hard copy newspapers and magazines. Those who didn't support this did not think PressReader was a suitable replacement.

## Warm hub/Toilet space

Many respondents highlighted the importance of libraries as warm spaces. It was also noted that they can often be the only space where there is free access to a public bathroom and there would be an impact on the older and disabled community if this was taken away. They were also highlighted as a key venue to help people combat isolation and loneliness.

## Variable hours for workers and parents

There were concerns raised about basing the scheduling of library hours on footfall patterns as some people value the quieter hours, for instance, older people, job-seekers, childminders and parents or carers of young children who may bring their children to libraries early in the morning, when there was low footfall, to attend groups and classes. It was also stressed by some that it was better for some children with special needs and disabilities to attend during these hours.



## Self Service/Volunteers

People commented on how any reliance on self-service machines would impact their usage of libraries negatively, making them feel unwelcome and less safe. Many respondents also commented that they felt the introduction of updated IT and CCTV was not a valid replacement.

There were concerns raised by respondents about whether volunteers were suitable to fill in, describing how often librarians have to deal with complex issues including running literacy initiatives and community building events, as well as signposting patrons to other services.

## Education/Culture/Socio-Economic

There were concerns that cuts to the budget would result in reduced literacy and education for deprived populations and lead to poorer physical and mental health in the future. There were also concerns regarding the negative impact it may have on social mobility in the borough.

# Engagement Completed to Date

As well as keeping in mind previous consultation feedback as outlined above, during May and July 2024 we have also conducted a series of informal engagements. These engagements included conversations with library users in each library to understand how and when they use the libraries. These conversations with over 50 people including younger people have informed the development of the Equality Impact Assessment which accompanies this document. We additionally met with an internal library stakeholder group and library staff separately to get an early steer on thoughts on income generation and growth. Participation from the different Friends of Libraries Groups was invited on income generation and growth and the design principles for the options. A number of meetings were held with the Friends of Reading and Education Group to additionally sense-check the design principles for options developed in this consultation.

## Other Cost-Saving Options Considered

The required savings could be achieved by closing libraries. However, the council does not wish to see libraries in the borough close. Reducing opening hours would allow us to make necessary savings while avoiding closures.

The measures below were considered as part of the Budget Consultation 2024-2025, conducted in December 2023 and January 2024. Concerns expressed by the public about these proposals were noted and these plans were not progressed, as mentioned in previous sections. As a result, no further modelling or feasibility work has been undertaken on these proposals.

Nonetheless, we recognise that those responding to this consultation may wish to express a view about alternative ways of achieving savings. The alternative approaches the council has considered but is not proposing to take forward (in the light of feedback from the Budget Consultation, as explained above) are as follows:

- **Self-service.** This would involve the introduction of self-service technology in libraries. It would also require investment in digital and other technologies, such as CCTV. It would mean there would be times where library staff were not present at some libraries.
- **Community-led models e.g. volunteer options.** This would involve developing services jointly with the local community, although libraries would remain part of the statutory library network. In essence, it would mean a greater reliance on volunteers rather than council staff to run and staff libraries.
- **Removal of hard copy newspapers and magazines.** This would involve only providing access to newspapers and magazines in digital format through PressReader, which provides many newspapers and magazines from around the globe.

As explained in the Budget Consultation, high-level modelling indicates that the introduction of a self-service model, possibly in combination with a move to community-led models, could achieve around £676,000 of savings. The savings which could be achieved by moving to more community-led provision alone are difficult to calculate, because operating costs vary significantly across libraries, and the level of savings would be contingent on exactly how such a model was implemented (which would in turn depend on the appetite within individual communities for greater volunteer involvement).

Ceasing to provide access to hard copy newspapers and magazines could save the council around £35,000.

As a council we are required to keep all our budgets under review, including our expenditure on libraries. At present, the only proposed change to the library service concerns opening hours. Any future proposed changes would be subject to further engagement with the public, as appropriate.

Separately, in the medium-term we plan to develop a new library strategy which will be an overarching vision for the library service. The ambition is that this will be co-created with residents and stakeholders and will help ensure that libraries are put on a sustainable footing for years to come, including through exploring opportunities for income generation.



# Background Information on Proposals

- Haringey Libraries currently have some of the longest opening hours in London.
- The aim of these proposals is to deliver a savings target of £675,000. This figure was previously consulted on as part of the 2024/25 budget setting process and agreed at Full Council in March 2024.
- Savings would come from post reductions, mainly through existing vacancies
- All libraries would remain open under these proposals.
- All library buildings would be retained in council ownership.
- A full needs, usage and demographic analysis has been carried out to inform the proposals on which we are consulting.
- An Equality Impact Assessment has been developed to inform options and will be developed further based on feedback from this consultation. This will be put before the Council Cabinet, together with a report on consultation responses, to inform their final decision.
- We aim to minimise the need for staff redundancies, but we cannot guarantee there will be no redundancies. We will follow our organisational change policies and consult staff and trade unions as part of the consultation process. It is anticipated that library buildings could be used by other services and organisations during hours when the library service is closed.
- We have a statutory duty to provide a comprehensive and efficient library service under the 1964 Libraries Act. We believe that these proposals will continue to allow us to fulfil this duty.

## Haringey Libraries: Key Facts

- 9 libraries in total
- 3 of these are large libraries sometimes known as main libraries.

**Wood Green Library**

**Marcus Garvey Library**

**Hornsey Library**

- 6 of these are branch libraries.

**Alexandra Park  
Library**

**Coombes Croft  
Library**

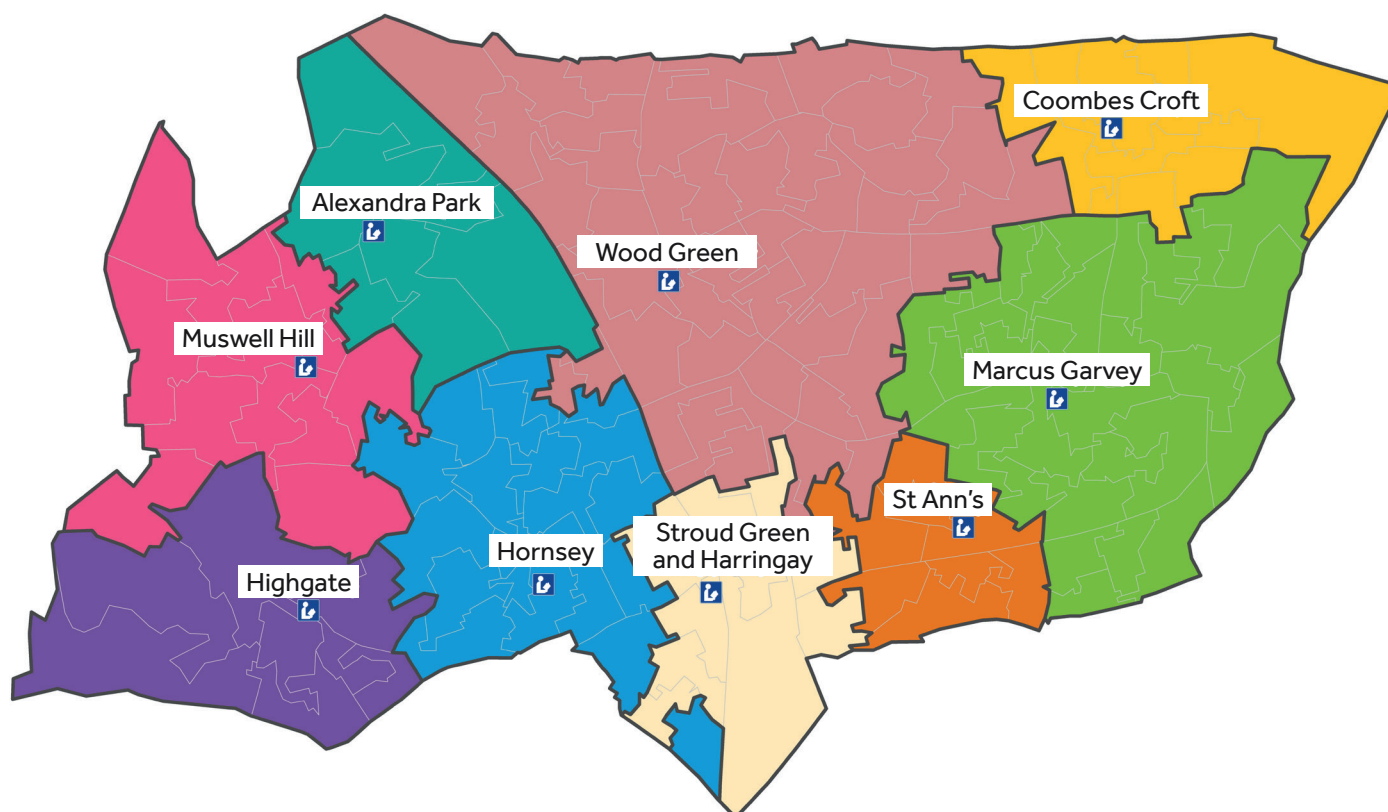
**Highgate Library**

**Muswell Hill  
Library**

**St Ann's Library**

**Stroud Green and  
Harringay Library**

The locations of the libraries are indicated on the map on the following page.



## Library Groupings

For operational purposes the 9 libraries form 3 groupings of libraries as illustrated. The purpose of these groupings is to help with planning opening hours across a locality. The large libraries maintain a wider range of library stock, have more space and facilities such as study space and public access to computers and generally offer more activities and events.

Both options maintain longer opening hours at the main libraries for this reason. The main libraries are also mostly located close to good transport links and so are more accessible to more residents from across the borough.

Each group = 1 large library + 2 branch libraries

- Wood Green Group = Wood Green + Alexandra Park + Muswell Hill
- Marcus Garvey Group = Marcus Garvey + Coombes Croft + St Ann's
- Hornsey Group = Hornsey + Highgate + Stroud Green & Harringay

## Existing Opening Hours

The tables below show the existing hours the libraries are open and the total number of hours each library is open for weekly. All libraries are open until 7pm Monday to Friday, and Saturday until 5pm, with no lunchtime closures. The three largest libraries are open on Sundays for 4 hours. This gives a total of 525 hours a week.

### Wood Green Group

#### Wood Green Library

Mon	Tue	Wed	Thu	Fri	Sat	Sun	Total
9am to 7pm	9am to 7pm	10am to 7pm	9am to 7pm	9am to 7pm	9am to 5pm	12pm to 4pm	61 hours



## Alexandra Park Library

Mon	Tue	Wed	Thu	Fri	Sat	Sun	Total
9am to 7pm	9am to 7pm	10am to 7pm	9am to 7pm	9am to 7pm	9am to 5pm	Closed	57 hours

## Muswell Hill Library

Mon	Tue	Wed	Thu	Fri	Sat	Sun	Total
9am to 7pm	9am to 7pm	10am to 7pm	9am to 7pm	9am to 7pm	9am to 5pm	Closed	57 hours

## Marcus Garvey Group

### Marcus Garvey Library

Mon	Tue	Wed	Thu	Fri	Sat	Sun	Total
9am to 7pm	9am to 7pm	10am to 7pm	9am to 7pm	9am to 7pm	9am to 5pm	12pm to 4pm	61 hours

### Coombes Croft Library

Mon	Tue	Wed	Thu	Fri	Sat	Sun	Total
9am to 7pm	9am to 7pm	10am to 7pm	9am to 7pm	9am to 7pm	9am to 5pm	Closed	57 hours

### St Ann's Library

Mon	Tue	Wed	Thu	Fri	Sat	Sun	Total
9am to 7pm	9am to 7pm	10am to 7pm	9am to 7pm	9am to 7pm	9am to 5pm	Closed	57 hours

## Hornsey Group

### Hornsey Library

Mon	Tue	Wed	Thu	Fri	Sat	Sun	Total
9am to 7pm	9am to 7pm	10am to 7pm	9am to 7pm	9am to 7pm	9am to 5pm	12pm to 4pm	61 hours

### Highgate Library

Mon	Tue	Wed	Thu	Fri	Sat	Sun	Total
9am to 7pm	9am to 7pm	10am to 7pm	9am to 7pm	9am to 7pm	9am to 5pm	Closed	57 hours

### Stroud Green & Harringay Library

Mon	Tue	Wed	Thu	Fri	Sat	Sun	Total
9am to 7pm	9am to 7pm	10am to 7pm	9am to 7pm	9am to 7pm	9am to 5pm	Closed	57 hours

# How We've Designed the Proposals for Varying Hours

Haringey Council is grappling with the challenge of making necessary budget cuts whilst striving to maintain access to essential library services for everyone.

The two options presented in this consultation represent an intensive and iterative process in which multiple models have been analysed over a period of months. A long list of possible options was modelled and worked through carefully before presenting the following shortlist of two options to the public for feedback.

These options reflect a process of thorough analysis and consideration of a range of factors including operational feasibility, library footfall patterns, the Needs Assessment and the Equality Impact Assessment. Each option has been developed with a distinct priority in mind and comes with different implications. Full consideration of the public's feedback will be a key part of the decision-making process.

More information about the data considered by the council is set out in the Needs Assessment and Equality Impact Assessment published alongside this consultation.

As described in the section 'Engagement Completed to Date', we have also carried out initial qualitative engagement with library users, Friends of Libraries groups and other groups. Additionally, we have spoken to neighbouring library services in other boroughs to understand their offer and any likely future changes that could impact Haringey residents travelling to neighbouring boroughs to access a library.

## Branch Closures and Impacts on Data

It should be noted that three libraries have had periods of closure in recent years to undertake extensive improvements. These include Highgate (Shepherd's Hill) and Alexandra Park which are now re-opened. The other is Muswell Hill which remains closed, while renovations are completed. This has affected the levels of internal usage data for these libraries, particularly in relation to more granular detail on daily and hourly footfall. There is more explanation of this in the Needs Assessment.





## Design Principles

We've adopted a range of overarching design principles which inform both options. These principles reflect a combination of operational considerations, analysis and interpretation of available data, and our Needs Assessment and Equality Impact Assessment. These principles are as follows:

- Each library requires a minimum number of staff to operate safely and comply with health and safety laws; this is determined by the size and layout of the different buildings. This limits the number of libraries which can be open at any one time while still achieving savings.
- Longer opening hours should be maintained at the main libraries due to their larger size and broader service offerings.
- Arrangements will remain in place via the Facilities Management team responsible for council buildings to allow other co-located services or external groups to use library spaces for events or other activities even if the library service is not operating on that day or at that time.
- The proposals should seek to minimise the negative impacts of reductions in hours.
- In the context of inequalities within the borough we should also consider how to mitigate existing inequities of access.
- Libraries, and opening hours, should continue to be organised according to the current operational groupings and a library within each grouping should generally be available to ensure access within reasonable travelling distance.
- The proposals should seek to achieve a level of consistency in opening patterns, as far as possible.
- The proposals should reflect daily and hourly usage data, as discussed in the Needs Assessment, wherever possible and appropriate. For example, the quietest hour for all libraries is weekdays between 6pm-7pm, hence both options propose that libraries will be closed during these hours.
- Lunchtime closures are proposed for branch libraries as this contributes to the savings by allowing staff to take a lunchtime break without paying additional staff for lunchtime cover, as is currently in place. During weekdays this arrangement preserves longer opening hours in the evening (generally until 6pm) which protects a level of access for children visiting after school and young people studying.
- Lunchtime closures are also proposed on Saturdays for branch libraries because this preserves opening and closing times that are as close as possible to the current ones.
- The proposals should avoid the closure of any library on consecutive days. This means: that if a customer's usual library is closed on a particular day, their nearest library will generally be open (in addition to their nearest large library) from Monday to Saturday; and that their usual library will be open on the following day, excluding bank holidays.
- There should be at least one library open on Sunday in the borough. Whilst footfall is significantly lower on Sundays, hundreds of people use the service on this day and access should be protected.

# Comparing Options

We have also used specific design principles to inform the two options we are inviting feedback on. A summary of the key aspects of these options is as follows.

## Option 1

**Prioritises Even Distribution of Available Hours:** Option 1 shares available opening hours equally between the large or main libraries and the branch libraries, as the existing model does.

**Cost Savings:** This option delivers all of the cost savings.

**Service Availability:** Ensures a library is always open Monday to Saturday, within reasonable travelling distance. Under this option, branch libraries would be closed on two weekdays each and closed for lunch every day. Only Wood Green library would be open on Sundays.

## Option 2

**Prioritises the Balance Between Need and Provision:** Option 2 results in the library service in the east of the borough being the least affected by a reduction in library opening hours. This option aims to address issues of digital exclusion in the areas highlighted in the accompanying needs assessment and maximise access to the library service where residents may face multiple disadvantages.

**Cost Savings:** This option delivers all of the cost savings.

**Service Availability:** More variable opening patterns across the borough. Three branch libraries open on Sundays.

	Illustration of Options Across Whole Service	Option 1			Option 2		
1	Total hours per week across all library groups	322			348		
2	Hours per week for each library group	Hornsey	Wood Green	Marcus Garvey	Hornsey	Wood Green	Marcus Garvey
		106	110	106	108	107.5	132.5

With regard to Sunday opening hours, Option 2 involves three branch libraries opening rather than only one main library, as in Option 1. A large library opening on Sunday requires six members of staff, whereas each branch library requires two members of staff. Under Option 2, in order to mitigate the effect of shorter opening hours in the Wood Green and Hornsey Groups overall, we are proposing that three branch libraries would be open on Sundays rather than one large library. However, we recognise that there are also advantages in Wood Green being open on every day of the week, given that it is centrally-located, well-served by public transport, and has the widest range of stock and the most computers. We welcome specific feedback on our proposals for Sunday opening hours under both Options 1 and 2.

The proposed changes to opening hours will affect the timetabling of activities run or facilitated by library staff. Details about the activities currently available from each library, and an indication of how they may be affected by the proposed changes to opening hours, are set out at Appendix 1. The council will aim to ensure that the range of activities currently offered at each library remains as similar as possible to the present offer. In particular, there will be no change to the range of children's core activities\* offered at each library. but there may be changes to days and frequencies of activities running. However, due to changes in staffing arrangements, some activities, excluding children's core activities, may no longer be offered from particular libraries. Wherever possible, we will aim to ensure that those activities are offered from nearby libraries.

\*the list of children's core activities is provided in Appendix 1



# About Option 1

The guiding design principles for this option are:

- Equality of access to libraries where opening hours are scheduled across the borough in the same way for large libraries and branch libraries, respectively.
- Ensuring that between Monday-Saturday residents across the borough will have access to at least two libraries in each group.
- Maintaining Sunday opening of one large centrally located library.

Option 1 ensures that everyone has the same access to the service between Monday to Saturday wherever they live in the borough. Equal distribution of provision across the borough is the basis for both the existing operating model and Option 1. This option ensures that the total number of allotted opening hours is equal across the library groupings.

Option 1 was developed alongside a range of more than ten other options, some of which included greater cost savings. However, none of the alternative options were progressed to this consultation stage. The reasons for rejecting other options for consultation, despite some offering potentially greater cost savings, is due to the likely negative impacts on users of libraries across the borough. Option 1 is presented as the closest any of the previously modelled options could get to tracking existing operational hours, whilst delivering most of the cost savings required.

Advantages of Option 1	Disadvantages of Option 1
Consistency of opening hours within groupings and across the borough.	There is only access to one library on Sundays.
Access to at least 2 libraries in each group available between Monday and Saturday.	



# Opening Hours Proposal Option 1

The opening hours proposal below is subject to change taking into consideration public feedback from the consultation process.

Please consult the table alongside the explanatory text beneath it and give your feedback in the consultation questionnaire.

## Wood Green Group

### Wood Green Library

Mon	Tue	Wed	Thu	Fri	Sat	Sun	Total
10am to 6pm	10am to 6pm	10am to 6pm	10am to 6pm	10am to 6pm	9am to 5pm	12pm to 4pm	52 hours

### Alexandra Park Library

Mon	Tue	Wed	Thu	Fri	Sat	Sun	Total
9.30am to 6pm Closed 12.30 to 1.30pm	9.30am to 6pm Closed 12.30 to 1.30pm	Closed	9.30am to 6pm Closed 12.30 to 1.30pm	Closed	9am to 4.30pm Closed 12.30 to 1.30pm	Closed	29 hours

### Muswell Hill Library

Mon	Tue	Wed	Thu	Fri	Sat	Sun	Total
9.30am to 6pm Closed 12.30 to 1.30pm	Closed	9.30am to 6pm Closed 12.30 to 1.30pm	Closed	9.30am to 6pm Closed 12.30 to 1.30pm	9am to 4.30pm Closed 12.30 to 1.30pm	Closed	29 hours

## Marcus Garvey Group

### Marcus Garvey Library

Mon	Tue	Wed	Thu	Fri	Sat	Sun	Total
10am to 6pm	10am to 6pm	10am to 6pm	10am to 6pm	10am to 6pm	9am to 5pm	Closed	48 hours

### Coombes Croft Library

Mon	Tue	Wed	Thu	Fri	Sat	Sun	Total
9.30am to 6pm Closed 12.30 to 1.30pm	9.30am to 6pm Closed 12.30 to 1.30pm	Closed	9.30am to 6pm Closed 12.30 to 1.30pm	Closed	9am to 4.30pm Closed 12.30 to 1.30pm	Closed	29 hours

## St Ann's Library

Mon	Tue	Wed	Thu	Fri	Sat	Sun	Total
9.30am to 6pm Closed 12.30 to 1.30pm	Closed	9.30am to 6pm Closed 12.30 to 1.30pm	Closed	9.30am to 6pm Closed 12.30 to 1.30pm	9am to 4.30pm Closed 12.30 to 1.30pm	Closed	29 hours

## Hornsey Group

### Hornsey Library

Mon	Tue	Wed	Thu	Fri	Sat	Sun	Total
10am to 6pm	10am to 6pm	10am to 6pm	10am to 6pm	10am to 6pm	9am to 5pm	Closed	48 hours

### Highgate Library

Mon	Tue	Wed	Thu	Fri	Sat	Sun	Total
9.30am to 6pm Closed 12.30 to 1.30pm	9.30am to 6pm Closed 12.30 to 1.30pm	Closed	9.30am to 6pm Closed 12.30 to 1.30pm	Closed	9am to 4.30pm Closed 12.30 to 1.30pm	Closed	29 hours

### Stroud Green & Harringay Library

Mon	Tue	Wed	Thu	Fri	Sat	Sun	Total
9.30am to 6pm Closed 12.30 to 1.30pm	Closed	9.30am to 6pm Closed 12.30 to 1.30pm	Closed	9.30am to 6pm Closed 12.30 to 1.30pm	9am to 4.30pm Closed 12.30 to 1.30pm	Closed	29 hours

## Summary of Option 1 proposal

All large libraries would be open with no lunchtime closures on:

- Weekdays 10am-6pm
- Saturdays 9am-5pm

Sundays would see all libraries closed, except for Wood Green which would be open from 12-4pm.

Except at lunchtimes, there would always be a branch library open in each library grouping on:

- Weekdays between 9.30am-12.30pm and 1.30pm-6.00pm
- Saturdays 9am-4.30pm

The days when the branch libraries would be open would need to vary to ensure coverage within library groupings. The proposed opening and closing patterns have been shaped by the usage patterns shown in the footfall data which is shared in the accompanying Needs Assessment.



## Implications of Option 1 proposal

- A branch library in each group would be open at all times (Monday-Saturday).
- Each branch library would be open for 29 hours per week.
- 2 large libraries would be open for 48 hours Mon-Saturday.
- One large library would be open for 4 hours on Sunday giving that library a total of 52 hours.
- Overall hours for all library services are 322 hours in total.





## About Option 2

The guiding design principles for this option are:

- Prioritisation of access to libraries in the east of the borough where the data shows greater need on a range of indicators as explained in the Needs Assessment and Equality Impact Assessment.
- Ensuring from Monday-Saturday residents across the borough will have access to at least two libraries (for at least part of the day) in each group

Option 2 reflects the opportunity to consider prioritising need over equal distribution of provision across the whole borough, the latter being the key design principle for Option 1. Option 2 would mean the council targeted its increasingly scarce resources where data shows services are most needed.

The accompanying Needs Assessment and Equalities Impact Assessment (EQIA) indicate greater need in the east of the borough on a range of different measures. For example, the EQIA discusses Haringey's significant attainment gap amongst children and young people with lower attainment most significant among young black residents. This aligns with data that shows that more library users who identify other than 'White British' use libraries in the east of the borough and Wood Green. As explained in the Needs Assessment, data from the library service as well as data from the London Office of Technology and Innovation (LOTI) also suggest that residents in the east of the borough are more likely to be digitally excluded and therefore more reliant on libraries for digital access.

Additionally, users of all areas surrounding libraries in the east, in particular Coombes Croft, are more likely to be young than in the rest of the borough (excepting Wood Green) and are more likely to experience disadvantages. Data also shows that Coombes Croft Library has the greatest likelihood of being where more local children and young people may live in households that face a range of challenges which may include: low incomes, overcrowding, low levels of qualifications and proficiency in English. Since libraries provide an important space where children and young people can supplement their study, Option 2 provides an opportunity to prioritise this in the east by ensuring most of the libraries in the Marcus Garvey Group are open weekdays until 6pm.

Advantages of Option 2	Disadvantages of Option 2
Prioritises areas where there are highest levels of need.	Creates an imbalance in opening hours between the east of the borough and the rest of the borough.
Achieves cost saving requirements.	Does not align as well to usage patterns in branch libraries as in Option 1, except in the east of the borough.
Allows for three branch libraries to open on Sundays because these have lower staffing needs to meet H&S requirements.	No large library is open on Sunday.

# Opening Hours Proposal Option 2

The opening hours proposal below is subject to change taking into consideration public feedback from the consultation process.

Please consult the table alongside the explanatory text beneath it and give your feedback in the consultation questionnaire.

## Wood Green Group

### Wood Green Library

Mon	Tue	Wed	Thu	Fri	Sat	Sun	Total
10am to 6pm	10am to 6pm	10am to 6pm	10am to 6pm	10am to 6pm	9am to 5pm	Closed	48 hours

### Alexandra Park Library

Mon	Tue	Wed	Thu	Fri	Sat	Sun	Total
9.30am to 6pm Closed 12.30 to 1.30pm	9.30am to 1.30pm or 1.30pm to 5.30pm	Closed	9.30am to 6pm Closed 12.30 to 1.30pm	Closed	9am to 4.30pm Closed 12.30 to 1.30pm	11am to 4pm	30.5 hours

### Muswell Hill Library

Mon	Tue	Wed	Thu	Fri	Sat	Sun	Total
9.30am to 6pm Closed 12.30 to 1.30pm	Closed	9.30am to 6pm Closed 12.30 to 1.30pm	Closed	9.30am to 6pm Closed 12.30 to 1.30pm	9am to 4.30pm Closed 12.30 to 1.30pm	Closed	29 hours

## Marcus Garvey Group

### Marcus Garvey Library

Mon	Tue	Wed	Thu	Fri	Sat	Sun	Total
10am to 6pm	10am to 6pm	10am to 6pm	10am to 6pm	10am to 6pm	9am to 5pm	Closed	48 hours

### Coombes Croft Library

Mon	Tue	Wed	Thu	Fri	Sat	Sun	Total
9.30am to 6pm Closed 12.30 to 1.30pm	9.30am to 6pm Closed 12.30 to 1.30pm	9.45am to 6pm Closed 12.30 to 1.30pm	9.45am to 6pm Closed 12.30 to 1.30pm	9.45am to 6pm Closed 12.30 to 1.30pm	9am to 4.30pm Closed 12.30 to 1.30pm	Closed	43.25 hours

## St Ann's Library

Mon	Tue	Wed	Thu	Fri	Sat	Sun	Total
Closed	9.30am to 6pm Closed 12.30 to 1.30pm	9.30am to 6pm Closed 12.30 to 1.30pm	9.30am to 6pm Closed 12.30 to 1.30pm	9.45am to 6pm Closed 12.30 to 1.30pm	9am to 4.30pm Closed 12.30 to 1.30pm	11am to 4pm	41.25 hours

## Hornsey Group

### Hornsey Library

Mon	Tue	Wed	Thu	Fri	Sat	Sun	Total
10am to 6pm	10am to 6pm	10am to 6pm	10am to 6pm	10am to 6pm	9am to 5pm	Closed	48 hours

### Highgate Library

Mon	Tue	Wed	Thu	Fri	Sat	Sun	Total
Closed	9.30am to 6pm Closed 12.30 to 1.30pm	Closed	9.30am to 1.30pm or 1.30pm to 5.30pm	9.30am to 1.30pm or 1.30pm to 5.30pm	9am to 4.30pm Closed 12.30 to 1.30pm	11am to 4pm	27 hours

### Stroud Green & Harringay Library

Mon	Tue	Wed	Thu	Fri	Sat	Sun	Total
9.30am to 6pm Closed 12.30 to 1.30pm	9.30am to 1.30pm or 1.30pm to 5.30pm	9.30am to 6pm Closed 12.30 to 1.30pm	Closed	9.30am to 6pm Closed 12.30 to 1.30pm	9am to 4.30pm Closed 12.30 to 1.30pm	Closed	33 hours

## Summary of Option 2 proposal

All large libraries would be open with no lunchtime closures on:

- Weekdays 10am-6pm, Saturdays 9am-5pm

No large libraries would open on Sundays.

Branch libraries would be closed on different weekdays but not on the same days in their groupings. Branch libraries would have half day opening. On whole days of opening, branch libraries would close for lunch including on Saturdays when all branch libraries would be open between 9am-12.30pm and 1.30pm and 4.30pm. Three branch libraries would be open on Sunday.

## Implications of Option 2 proposal

- All main libraries would open for 48 hours a week
- Library opening hours in the east of the borough would be most protected
- Three branch libraries would be open on Sunday
- Overall hours are 348 hours



# Appendix 1: Timetabled Activities

The tables below set out the current timetabled activities by library and whether or not the current timetabled activity is potentially affected under Options 1 and 2 as currently proposed.

Although there may be some changes to the range of activities (excluding children's core activities listed below) which run from particular libraries please note that 'affected' does not mean that the activity no longer will run. It does mean that under the option proposals as currently formulated there is the potential that the activity may need to take place on a different day or time or run at a different frequency. An activity is flagged as potentially affected where there is a proposal under either option that the library running the activity is either closed for that morning, afternoon, day, lunchtime or earlier closing time.

If an activity is not indicated as being affected, this does not guarantee that there will be no impact when a new operating model is implemented. Instead, it implies that the activity is less likely to be affected under the options proposed as currently formulated.

Marcus Garvey and Hornsey Libraries' activities are unaffected under either option.

Wood Green is potentially affected under Option 1 and 2.

Please note that any occasional activity that does not have a fixed day and time to run is not included in these timetables.

\*\*against any activity indicates an external provider

Children's core activities are: Storytime for families, Song/Rhyme time for families, Messy craft for families

## Alexandra Park Library

Day	Time	Activity	Option 1	Option 2
Monday	10.30 – 11am	Storytime for families		
Tuesday	10.30 – 12.30pm	Coffee Morning		Affected
Wednesday	1 – 2pm**	Stay and Play (Sensory)	Affected	Affected
Wednesday	10.30 – 11am	Song/Rhyme time for families	Affected	Affected
Thursday	10.30 – 11am**	Song/Rhyme time for families		
Friday	10.30 – 11am	Messy craft for families	Affected	Affected

## Coombes Croft Library

Day	Time	Activity	Option 1	Option 2
Monday	10.30 – 11.30am**	Song/Rhyme time for families		
Monday	10.30 – 11.30am	Stay and Play (Sensory)		

Day	Time	Activity	Option 1	Option 2
Monday	1 – 3pm**	Creative Clubs (for adults) Knitting & Crochet	Affected	Affected
Monday	3.30 – 6.30pm**	Piano recitals or tutorials		
Wednesday	10 – 11.30am	Storytime for families	Affected	
Wednesday	1 – 3pm**	Creative Clubs (for adults) Sewing	Affected	Affected
Wednesday	3.30 – 6.30pm**	Piano recitals or tutorials	Affected	
Thursday	2.30 – 3.30pm	Literacy & Numeracy Support		
Thursday	3.30 – 4.30pm	Creative/Games/Chess Clubs		
Saturday	11 – 12pm	Messy craft for families		
Saturday	2 to 4pm	Literacy & Numeracy Support		

## Highgate Library

Day	Time	Activity	Option 1	Option 2
Wednesday	10.30–11am	Storytime for families	Affected	Affected
Wednesday	10.15 – 11.30am**	Song/Rhyme time for families	Affected	
Friday	3.30 – 4.30pm	Messy craft for families	Affected	

## Hornsey Library

Day	Time	Activity	Option 1	Option 2
Monday	10.30to11am	Song/Rhyme time for families		
Tuesday	10.30 to 11am	Storytime for families		
Tuesday	2 – 4pm**	Creative Clubs (for adults) Knitting		
Wednesday	10.15 – 11.30am**	Song/Rhyme time for families		

Hornsey Library's activities are unaffected under either option.

## Marcus Garvey Library

Day	Time	Activity	Option 1	Option 2
Monday	10.30 – 11.15am	Storytime for families		
Wednesday	10.30 – 11.15am	Song/Rhyme time for families		
Tuesday	10.30 – 11.30am	Messy craft for families		
Wednesday	2.30 – 3.30pm	Literacy & Numeracy Support		
Thursday	4 – 6pm**	Piano recitals or tutorials		

Marcus Garvey Library's activities are unaffected under either option.

## Stroud Green & Harringay Library

Day	Time	Activity	Option 1	Option 2
Monday	2.30–3pm	Messy craft for families		
Tuesday	11 – 11.30am (Spanish)	Song/Rhyme time for families	Affected	Affected
Tuesday	2.30 – 3.30pm	Literacy & Numeracy Support	Affected	Affected
Wednesday	11 – 11.30am	Storytime for families		
Wednesday	10.15 – 11.30am**	Song/Rhyme time for families		
Wednesday	3.30 – 4.30pm	Messy craft for families		
Wednesday	2 – 5pm**	Creative Clubs (for adults) Art Group		
Friday	2 – 3pm	Stay and Play (Sensory)		

## St Ann's Library

Day	Time	Activity	Option 1	Option 2
Saturday	10.30 – 12pm	Messy craft for families		
Monday	3.30 – 5.30pm	Literacy & Numeracy Support		Affected
Monday	10.30 – 11.30am	Stay and Play (Sensory)		Affected

Day	Time	Activity	Option 1	Option 2
Tuesday	1 – 2pm**	Creative Clubs (for adults) Line Dancing	Affected	
Wednesday	10 – 1pm**	Creative Clubs (for adults)		Affected
Wednesday	3.30 – 5.30pm	Literacy & Numeracy Support	Affected	
Thursday	10.30 – 11.30am	Stay and Play (Sensory)		Affected
Thursday	10.15 – 12pm**	Digital Skills		
Thursday	4 – 5pm**	Creative Clubs (for adults) Crochet		
Friday	10.30 – 11.30am	Stay and Play (Sensory)	Affected	
Friday	4 – 5pm**	Creative/Games/Chess Clubs	Affected	
Saturday	12 – 2pm**	Creative/Games/Chess Clubs		
Saturday	2.30 – 4.30**	Creative Clubs (for adults) Drama	Affected	

## Wood Green Library

Day	Time	Activity	Option 1	Option 2
Monday	11 – 11.30am	Song/Rhyme time for families		
Tuesday	11 – 12pm	Messy craft for families		
Wednesday	10.30 – 11am	Storytime for families		
Thursday	5 – 6.30pm	Creative/Games/Chess Clubs		
Saturday	10 – 12pm**	Breastfeeding Drop In		
Thursday	5pm	Creative Clubs (for adults) Film showing	Affected	Affected
Saturday	1 – 3pm	Creative/Games/Chess Clubs		
Sunday	1 – 3pm	Creative/Games/Chess Clubs		Affected



# Have your say!

This document should be read in conjunction with the accompanying Needs Assessment and Equality Impact Assessment. Please ask your librarian for access to a reference copy.

Please complete the Consultation Questionnaire.